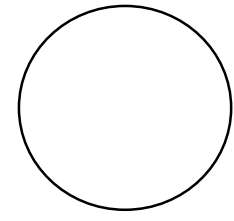


**Manway Cover Detail**



Outside Dia	25"
No of bolts:	16
Bolt length:	5 1/2"
Bolt dia.:	1"
Nom. size:	
Rating:	
Type:	
Height of above shell:	12"

All placement measurements are referenced from the Beaird Code Plate seam weld of Tank

U-1 on hand      Y/N  
 Heat Treat      Y/N  
 X-Ray              Y/N

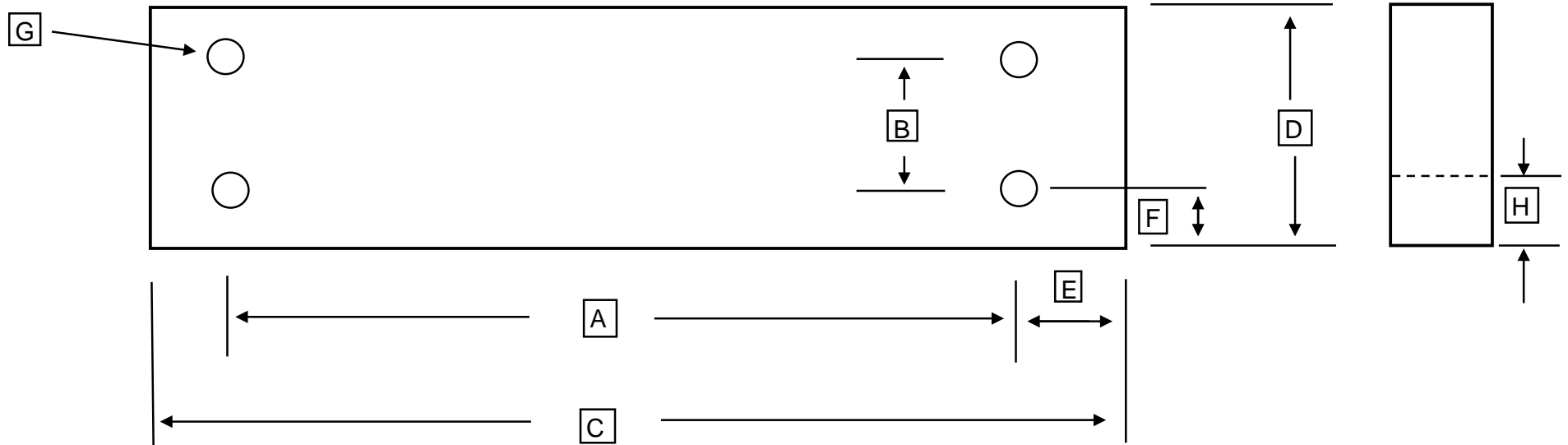
**Tank Openings**

**Tank Details**

Description	Dimensions
O/A Length	A - 97' 10"
Length - weld to weld	B - 85' 10"
Weld to End	C - 12' 6"
Width of Piers	D - 6"
C/C of Piers	E - 1'8"
C/L of Piers to Weld end	F - 72' 10"
	G - 77 1/2"
	H - 6' 7 1/2"
Saddle Pad Width	12"

No	Size	Type	Description	Manufacturer:	Beaird	Type of Head
1	2"		Nozzle 5 1/2" 8" tall		Feb-64	
2	4 1/2"		Nozzle 12' 8" 7" tall	Date of manufacture		
3	4 1/2"		Nozzle 18' 8" 7" tall	Test Pressure	398 PSIG	Tank Capacity USWG 83,802
4	4 1/2"		Nozzle 42' 8" tall	Working Pressure	250 PSIG @150deg	Tank Weight estimated 171869 lbs
5	2 1/2"		Nozzle 44' 1/4"	National Board Number		Tank Shell
6	1 1/4"		Nipple 84' 9 3/4"	Serial Number	123674	Tank Head
7	2 1/2"		Nozzle 85' 7" 8" tall	Steel Type:	A212-B	
8	2 1/2"		Nozzle CL, bottom of head 12"	Item Number	1301	Pier Type Concrete
9	2 1/2"		Nozzle 84' 2"	Jurisdiction #		Tank Saddles - Steel bolted to Pier
10	2 1/2"		Plug 83' 5"	Pressure Gauge		
11	2 1/2"		Plug 82' 8"	Liquid Level Gauge		
12	2 1/2"		Nozzle 54' 5"			
13	2 1/2"		Nozzle 34' 3"	Paint Condition:	Fair	
14	2 1/2"		Nozzle 31'	Color:	Silver	
15	2 1/2"		Plug 1' 11 1/2"			Information taken by: Coast to Coast USA NDE Services
16	2 1/2"		Plug 1' 2 1/2"	Relief Valve Type		Date: 3/5/2009
17	2 1/2"		Nozzle CL, bottom of head 12"	Test Date		Tank Location 639 Oylar Rd

Steel Saddle Footprint Sketch



	Number of bolt holes	4
A	Center to center of bolt holes	116 1/2"
B	Center to center of bolt holes	5 1/2"
C	Outside plate dimension	134 3/8"
D	Outside plate dimension	12"
E	Center of hole to edge of plate	9 1/4"
F	Center of hole to edge of plate	3 1/4"
G	Bolt Hole Diameter	
H	Bottom of Foot Plate to Shell	5 1/2"

